

# Lower Moreland High School

# Profile



555 Red Lion Road • Huntingdon Valley, Pennsylvania 19006 • (215)938-0220  
Guidance Office: (215)938-0114 • (215)947-0333fax

[www.lmtsd.org](http://www.lmtsd.org)

## School and Community

**The Lower Moreland Township School District is located in Montgomery County, PA**, twelve miles northeast of center-city Philadelphia. Primarily a residential, upper-middle class community, it has a population of nearly 13,000. Residents of the township are well-educated, and are largely found in professional, technical, and managerial occupations. They strongly support education.

The high school offers its highly competitive, largely college-bound students a rich array of academic courses and programs. With a 2010 class of 163, students are offered eighteen different Advanced Placement (AP) courses and all enrolled take the AP exam. More than 95% of the 2009 graduates continued on to higher education.

More than 30% of seniors are enrolled in AP classes: U.S. History, U.S. Government, European History, Economics, English Literature, English Language, Calculus AB/BC, Environmental Science, Physics, Chemistry, Biology, Art History, Studio Art, Music Theory, French, German, and Spanish. Other noteworthy programs include, Asian Cultures Seminar, World and American Studies, and a summer initiative for all students. Personal Finance, Writing Seminar and an interdisciplinary course in art and music entitled "Art, Music and Culture" are graduation requirements.

Students benefit from a highly educated, experienced faculty. With an average teaching experience of fifteen years, 95% of the professional staff have master's degrees; over half have at least 30 graduate credits beyond the master's. Several members of the teaching staff serve as adjunct faculty members at local colleges and universities, while others serve on executive boards of professional organizations. The student to faculty ratio is 11 to 1.

## 2009 - 2010

## The Curriculum

**ENGLISH:** Grades 9-12; honors courses offered at each grade level. World Studies and American Studies (9,10); AP English Language (12), AP English Literature (11); Creative Writing and Film Study (9-12).

**WORLD LANGUAGES:** French, German, and Spanish (grades 7-12); honors courses available levels III-VI. AP French, German, and Spanish.

**MATHEMATICS:** Algebra I, Geometry, Algebra II, Statistics and Probability, Analysis and Trigonometry, Calculus. Honors level offered in all math courses. AP Calculus AB/BC.

**SCIENCE:** Freshman Chemistry and Physics, Biology, Chemistry, Anatomy, Physics, and Research. Honors courses are available in Freshman Chemistry and Physics, Biology, Chemistry, and Physics. AP in Chemistry, Biology, Physics and Environmental Science.

**SOCIAL STUDIES:** World Studies, American Studies,

Economics, Political Science, Political and Consumer Education, Current Issues, Introduction to Law, Asian Cultures, and the Individual and Society. Honors courses may be taken in World Studies and American Studies. AP is offered in U.S. History, European History, Economics, and Government.

**ELECTIVES:** A wide array of electives is offered in Art, Business, Computers, Family and Consumer Science, Music, and Technical Education. AP is offered in Music Theory, Art History, and Studio Art.

**INTERDISCIPLINARY PROGRAMS:** Art, Music and Culture, American Studies (English and Social Studies), World Studies (English and Social Studies).

**OTHER ACADEMIC EXPERIENCES:** Virtual High School; Dual Enrollment with Montgomery County Community College & Pennsylvania State University; Community Action Program for Seniors (CAPS - Service in the community program).

Dr. Marykay Feeley  
Superintendent

Dr. Maryjane Richmond  
Assistant Superintendent

Daniel P. Burkholder  
Director of Special Education



Francis X. McKee  
High School Principal

Mark Mayson  
Assistant Principal & Athletic Director

Richard Marta  
Guidance Services Chair

### Graduation Requirements

Students are required to complete a minimum of 22 credits.

English	4 credits	Fine/Prac Arts	1 credit
Social Studies	3 credits	Physical Ed.	1 credit
Mathematics	3 credits	Health	½ credit
Science	3 credits	Humanities	1 credit
Electives	5 credits	Personal Finance	½ credit

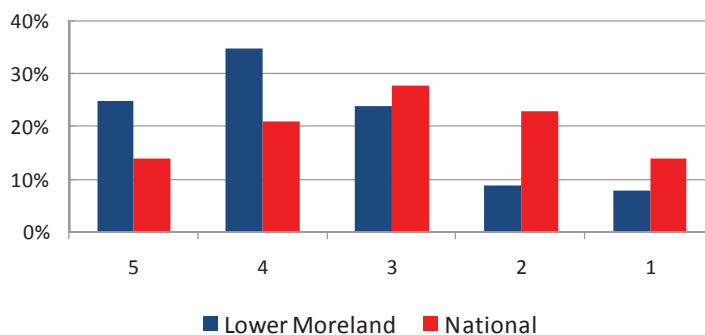
### Class Rank and GPA

Grade point average is calculated by assigning a point value to every subject except physical education and health. The sum of the points is then divided by the number of courses. Added to the GPA is a weight factor of .075 for each honors course and .15 for each Advanced Placement course where a grade of "C -" or better has been achieved. Class rank is determined by the GPA. The GPA is calculated at the end of the junior year. (Please refer to our separate statement on Class Rank.)

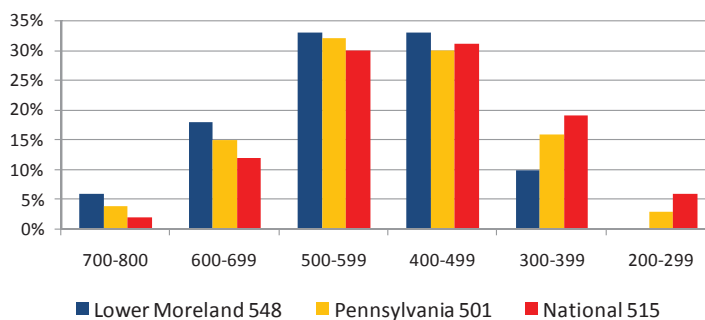
### Quintile Class Rank (Class of 2009)

Quintile	GPA
1	6.15 - 4.53
2	4.48 - 3.60
3	3.57 - 3.05
4	3.04 - 2.54
5	2.53 - 1.33

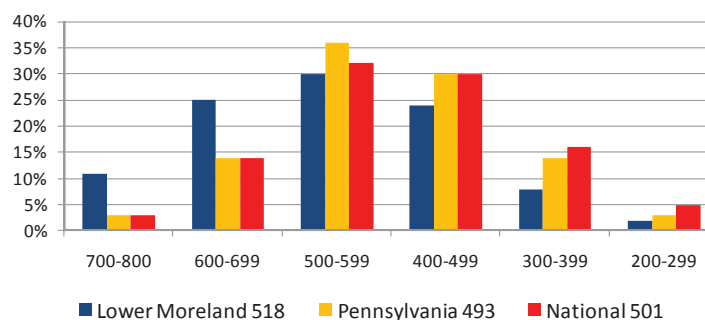
Advanced Placement Test Scores 2009



SAT Critical Reading- 2009



SAT Math- 2009



### Lower Moreland Highlights

- Over the past three years, Lower Moreland has had 8 National Merit semifinalists and 8 commended students.
- 95% of Lower Moreland's 2009 graduates are continuing their education. 80% of that group attend 61 different four-year colleges and universities; 15% attend community colleges and technical schools.
- More than 95% of all seniors exceed graduation requirements. 93% are taking at least one additional course in mathematics, 89% in science, and 92% in social studies.
- 94% of Lower Moreland's seniors have studied a world language – 40% for four or more years.
- 84% of all seniors are studying college-preparatory physics and 42% are studying calculus.
- 34% of the class of 2009 took at least one Advanced Placement course.
- 95% of the class of 2009 took the SAT tests.